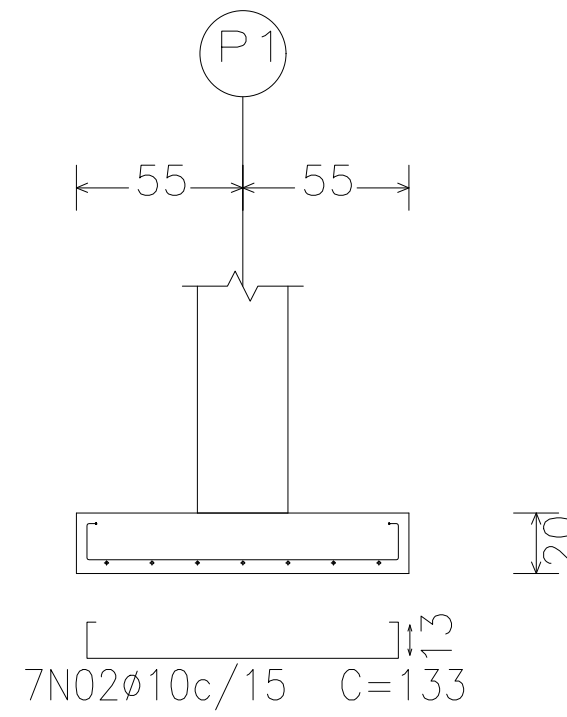
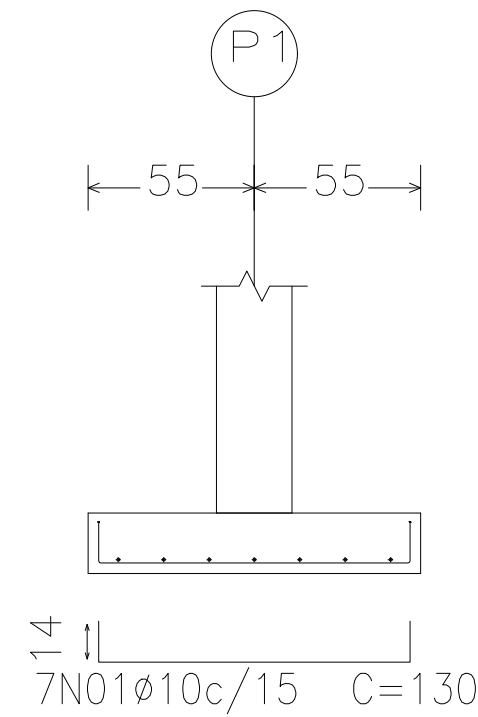
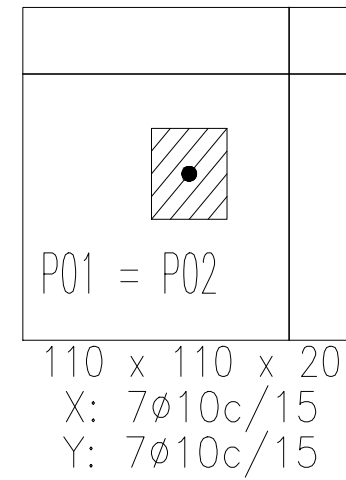
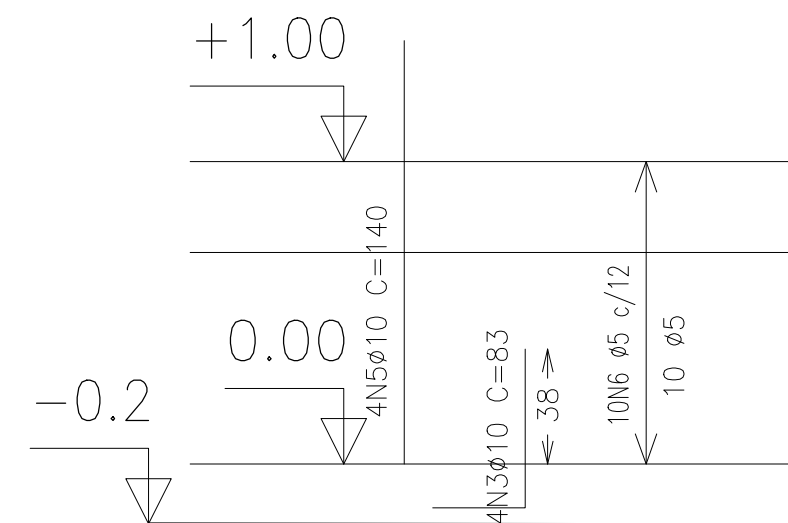
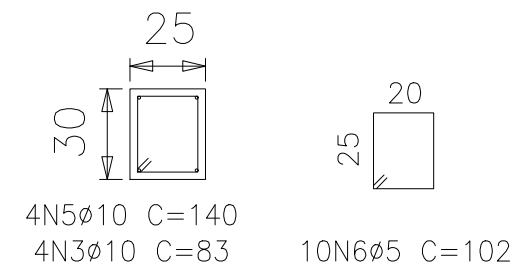
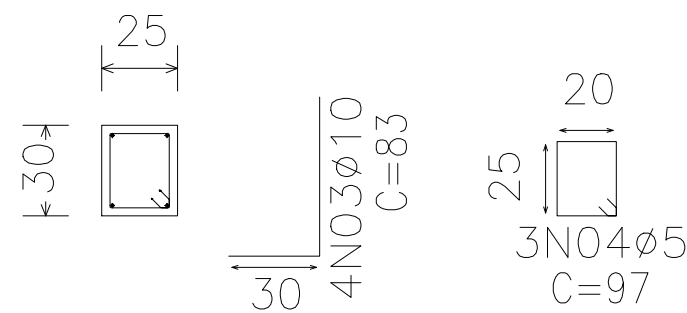
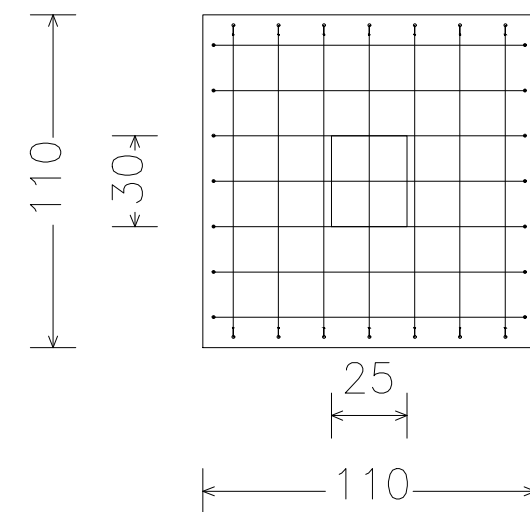


P1=P2

4Ø10 (30+15+38)

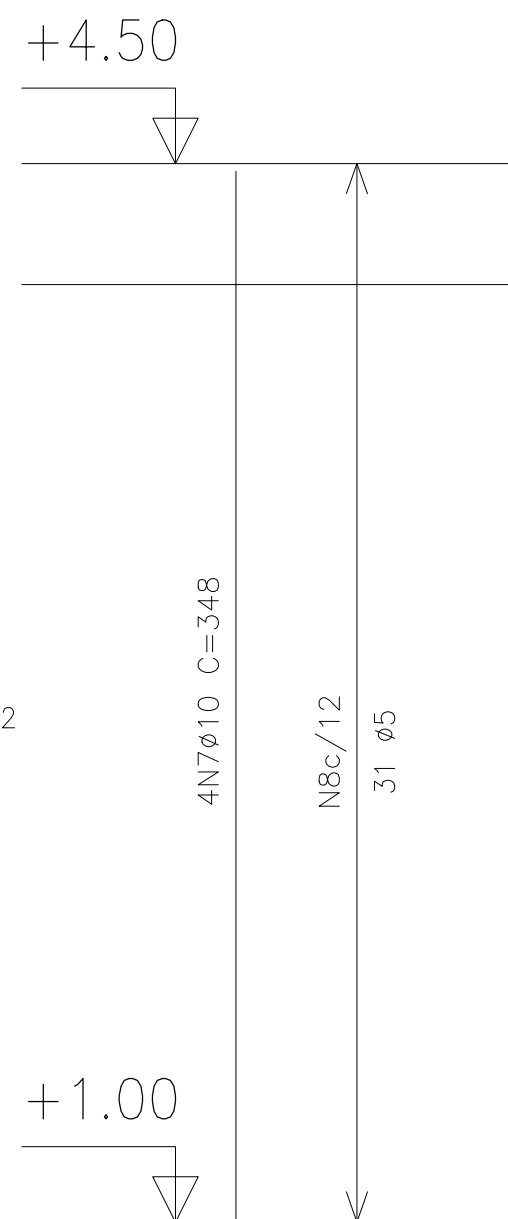
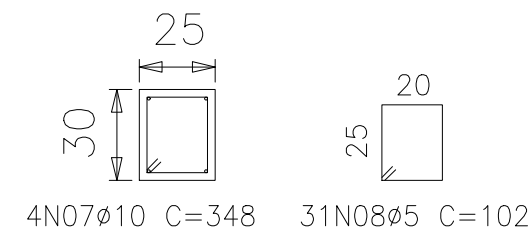


P1=P2



FUNDAÇÕES

P1=P2



PILARES

### LISTA DE FERROS

Elemento	POS.	Ø	Q	COMPRIMENTOS		PESO ( Kg )
				UNIT.(cm)	TOTAL (m)	
SAPATA	1	10	14	130	18,2	11,23
	2	10	14	134	18,76	11,57
	3	10	8	83	6,64	4,10
	4	5	6	97	5,82	0,90
	5	10	8	140	11,20	6,91
	6	5	20	102	20,4	3,14
PILAR	7	10	8	348	27,84	17,18
	8	5	62	102	63,24	9,74

### RESUMO AÇO

Ø	COMPRIMENTO ( m )	PESO ( Kg )
5	89,46	13,78
10	82,64	50,99
TOTAL		64,8

<b>Ufac</b>		<b>Prefeitura do Campus</b>	
TÍTULO: PROJETO ESTRUTURAL - BLOCO DA NUTRIÇÃO			
RESPONSÁVEL TÉCNICO: Eng. Lucas Rabim - CREA 21.151D/AC			
DOCUMENTO:			
LOCAL:	Bloco de Nutrição Campus Rio Branco	DATA:	16/07/2020
REVISÃO:	0	ESCALA:	1:50
		FOLHA:	01/02